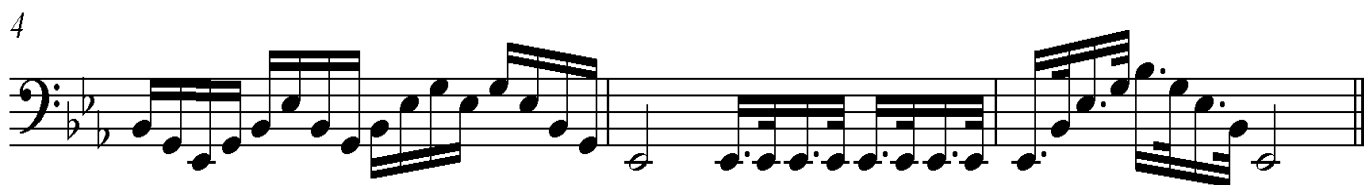


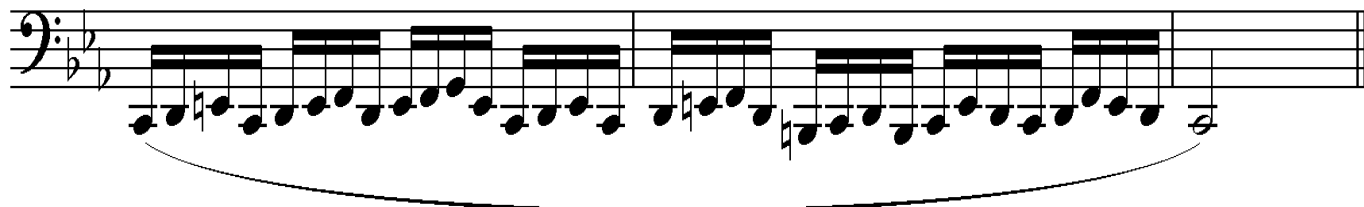
Central Ensemble Auditions – BRASS TECHNICAL EXERCISES

This page is for Brass Band, Wind Orchestra, Concert Orchestra and Symphony Orchestra
for Tuba

1. On the mouthpiece buzz a glissando from your lowest note to your highest, up and down.
2. Play from memory a chromatic scale of Eb, one and a half octaves, up and down to be played tongued or slurred at the panel's request.
3. Tonguing exercise to be played no slower than 76 bpm.



4. Finger dexterity exercise to be played no slower than 76 bpm.



5. Range Builder

